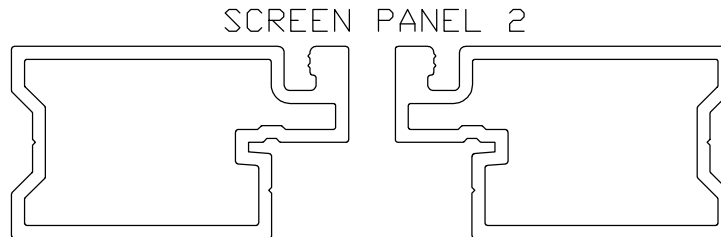



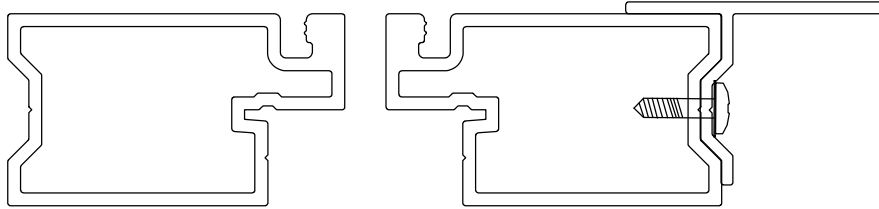
FACE FIRST CHANNEL TOWARDS THE EXTERIOR OF OPENING
 INSTALL SCREWS EVERY 24" OC. USE #27 DRILL FOR PRE-DRILLING



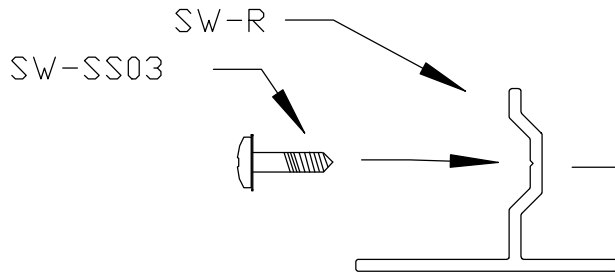
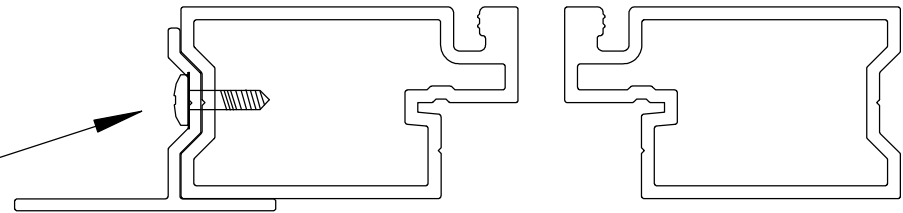
NOTICE:
 REVIEW AND UNDERSTAND ALL ASSOCIATED PAGES PRIOR TO CALCULATING ANY MANUFACTURE SIZES. R CHANNEL USE WILL AFFECT ALL PRODUCTION SIZES REQUIRED. ALSO REVIEW ALL STANDARD GUIDELINES FOR IMPORTANT INFORMATION, RESTRICTIONS, LIMITATIONS, AND RECOMMENDATIONS CONCERNING THIS EXTRUSION AND ITS USE. THIS PARTICULAR USAGE SUGGESTION MAY NEED TO BE MODIFIED FOR YOUR APPLICATION. IN ALL CASES, BE SURE TO CONSULT AND FOLLOW ALL LOCAL BUILDING CODES.

 CONNECTICUT SCREEN WORKS, INC Wallingford, CT 06492 (203) 741-0859	
Title: 2 PANEL INSTALL (VERT R CHANNEL)	
Date: 08/01/06	By: MC
Scale: N/A	Rev: 08/01/07 by MC
Page: 1 OF 3	Rev: 10/26/08 by MC
Alloy: 6063	Rev:
Temper: T5	Patent: 7,938,163
Length: 16'	Others Pending
Die:	
all contents copyright 2006, 2012 by CSW, Inc.	


SCREEN PANEL 1



SCREEN PANEL 2

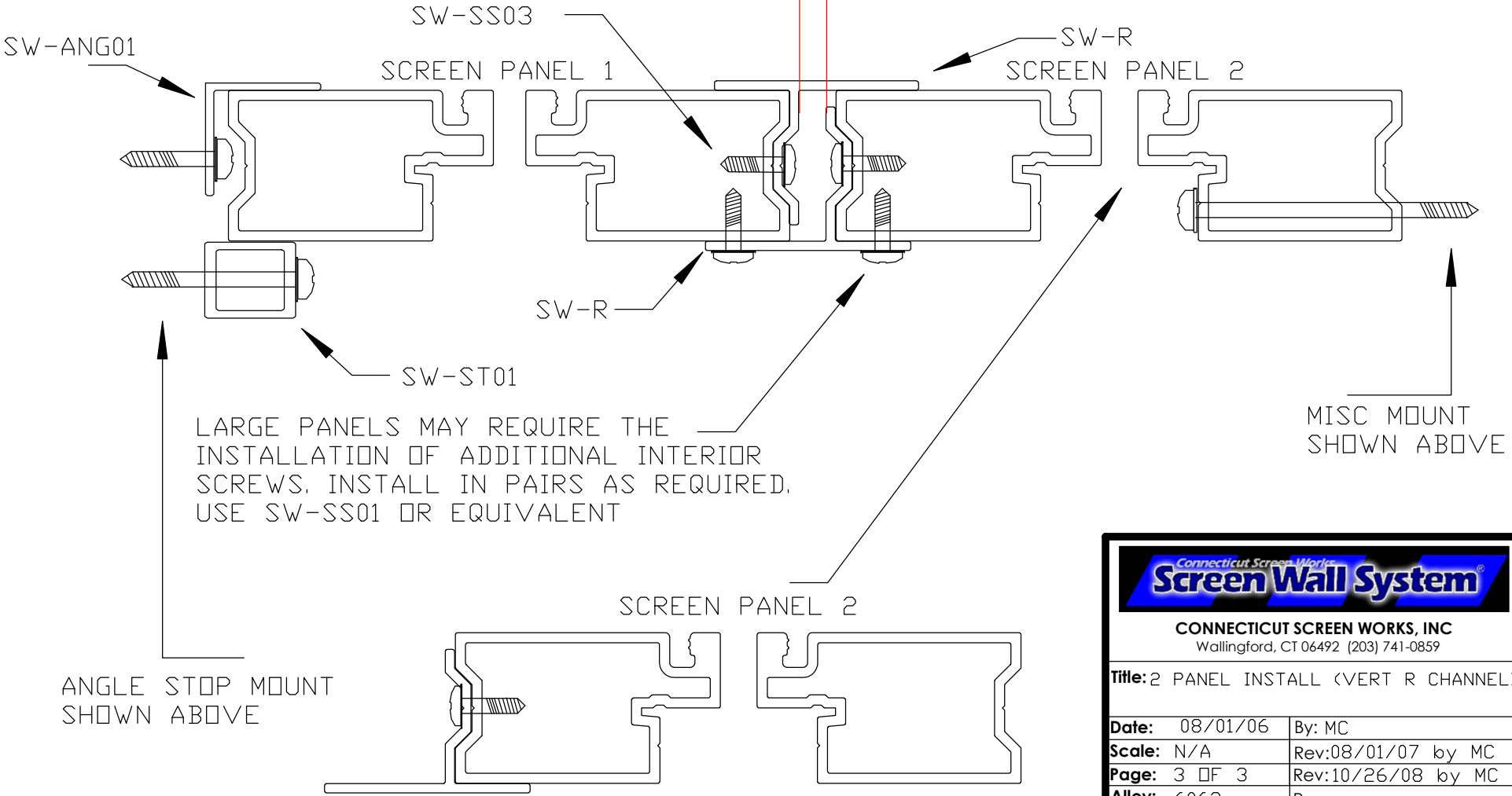


FACE SECOND CHANNEL TOWARDS THE INTERIOR OF OPENING
 INSTALL SCREWS EVERY 24" OC. USE #27 DRILL FOR PRE-DRILLING

	
CONNECTICUT SCREEN WORKS, INC Wallingford, CT 06492 (203) 741-0859	
Title: 2 PANEL INSTALL (VERT R CHANNEL)	
Date: 08/01/06	By: MC
Scale: N/A	Rev: 08/01/07 by MC
Page: 2 OF 3	Rev: 10/26/08 by MC
Alloy: 6063	Rev:
Temper: T5	Patent: 7,938,163
Length: 16'	Others Pending
Die:	
<small>all contents copyright 2006, 2012 by CSW, Inc.</small>	

APPROX .250

DISTANCE DETAILED IS TYP FOR ALL. ACTUAL SIZE MAY VARY BASED UPON CALCULATIONS MADE DURING PLANNING



LARGE PANELS MAY REQUIRE THE INSTALLATION OF ADDITIONAL INTERIOR SCREWS, INSTALL IN PAIRS AS REQUIRED, USE SW-SS01 OR EQUIVALENT

ANGLE STOP MOUNT SHOWN ABOVE

MISC MOUNT SHOWN ABOVE

INSTALL PANEL 2. R CHANNEL(S) WILL OVERLAP WHEN INSTALLED.

Connecticut Screen Works Screen Wall System	
CONNECTICUT SCREEN WORKS, INC Wallingford, CT 06492 (203) 741-0859	
Title: 2 PANEL INSTALL (VERT R CHANNEL)	
Date: 08/01/06	By: MC
Scale: N/A	Rev: 08/01/07 by MC
Page: 3 OF 3	Rev: 10/26/08 by MC
Alloy: 6063	Rev:
Temper: T5	Patent: 7,938,163
Length: 16'	Others Pending
Die:	
<small>all contents copyright 2006, 2012 by CSW, Inc.</small>	